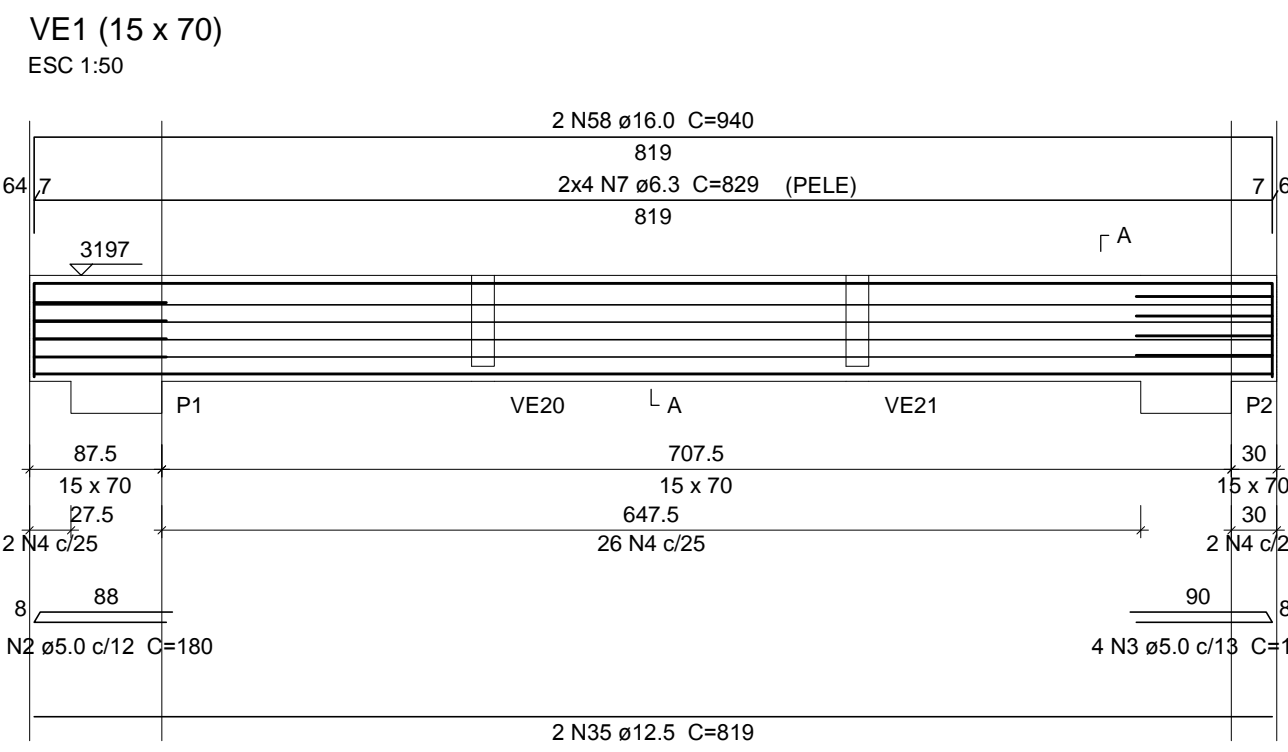
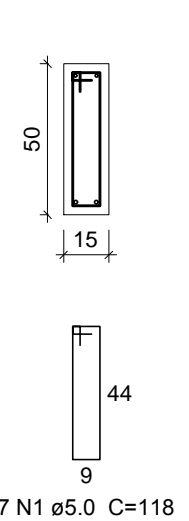
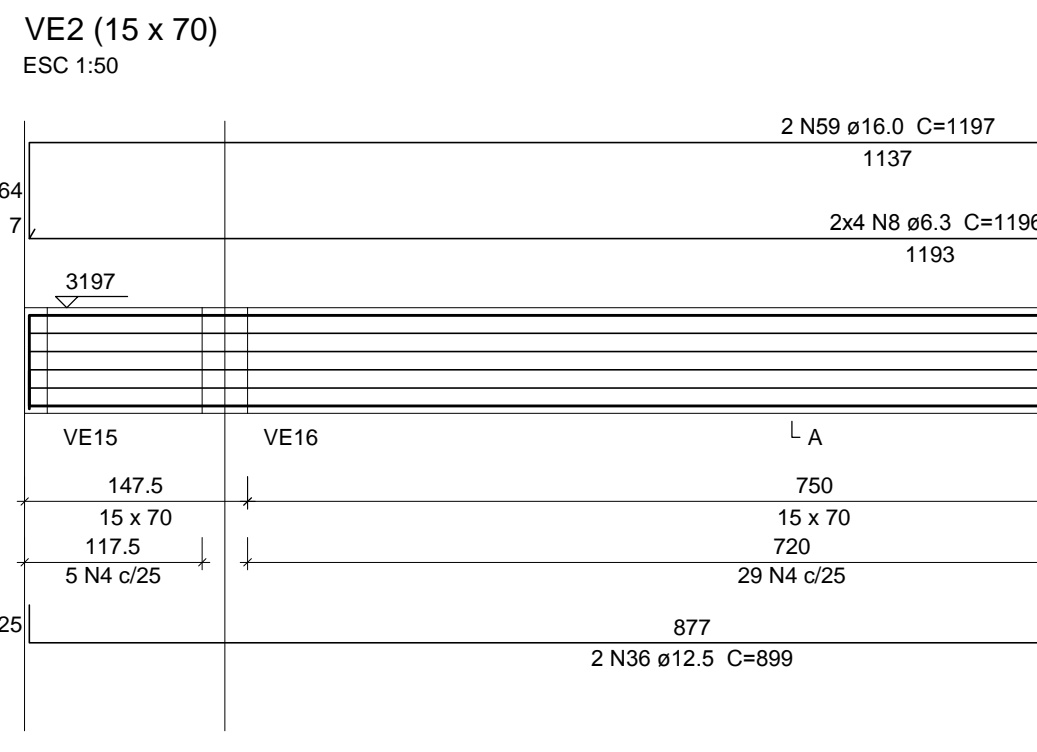
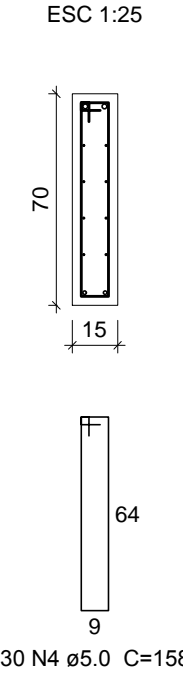


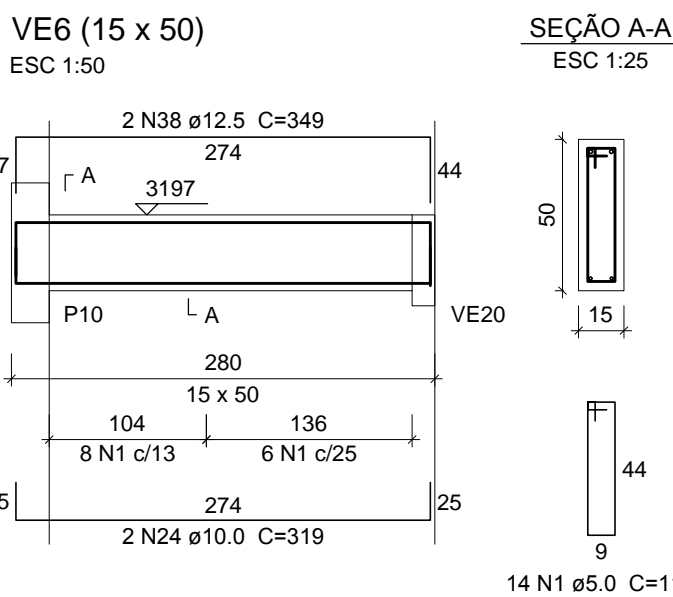
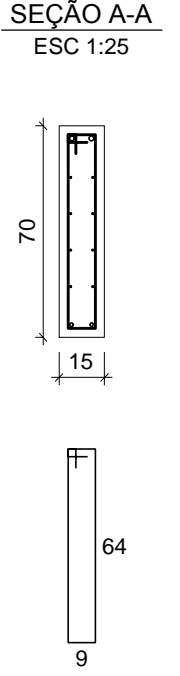
SEÇÃO A-A  
ESC 1:25



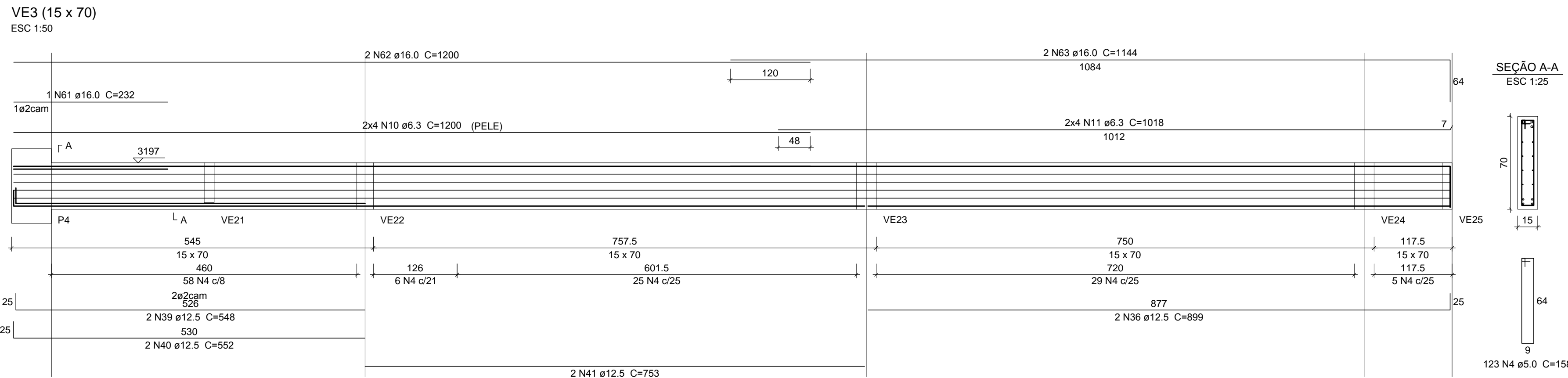
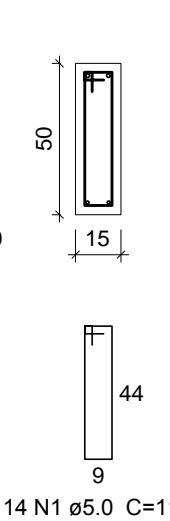
SEÇÃO A-A  
ESC 1:25



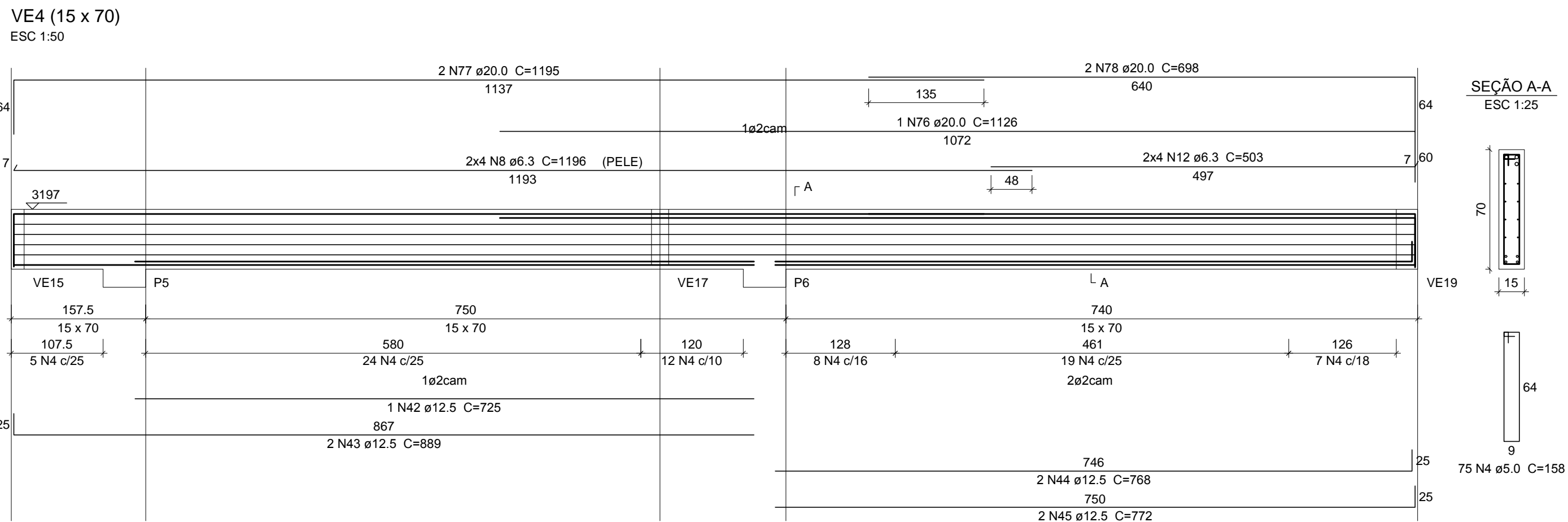
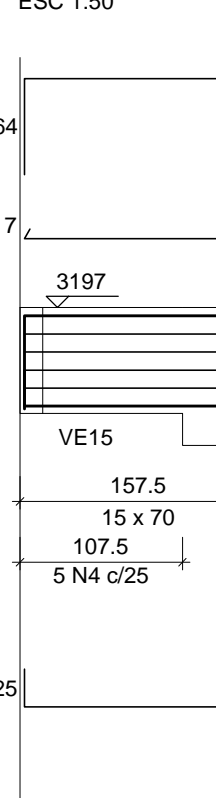
SEÇÃO A-A  
ESC 1:25



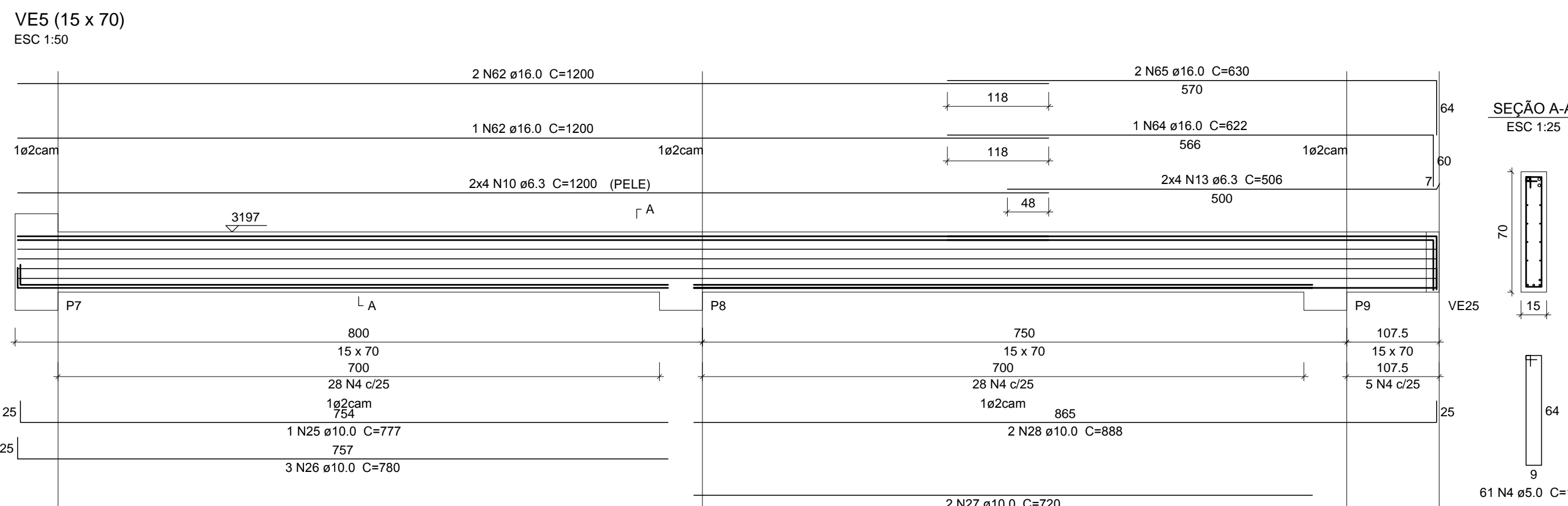
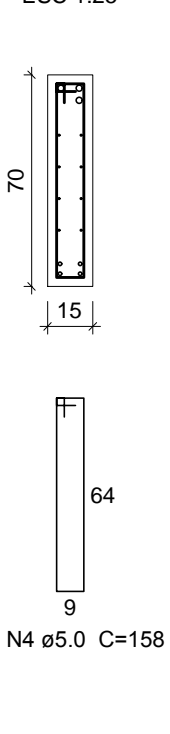
SEÇÃO A-A  
ESC 1:25



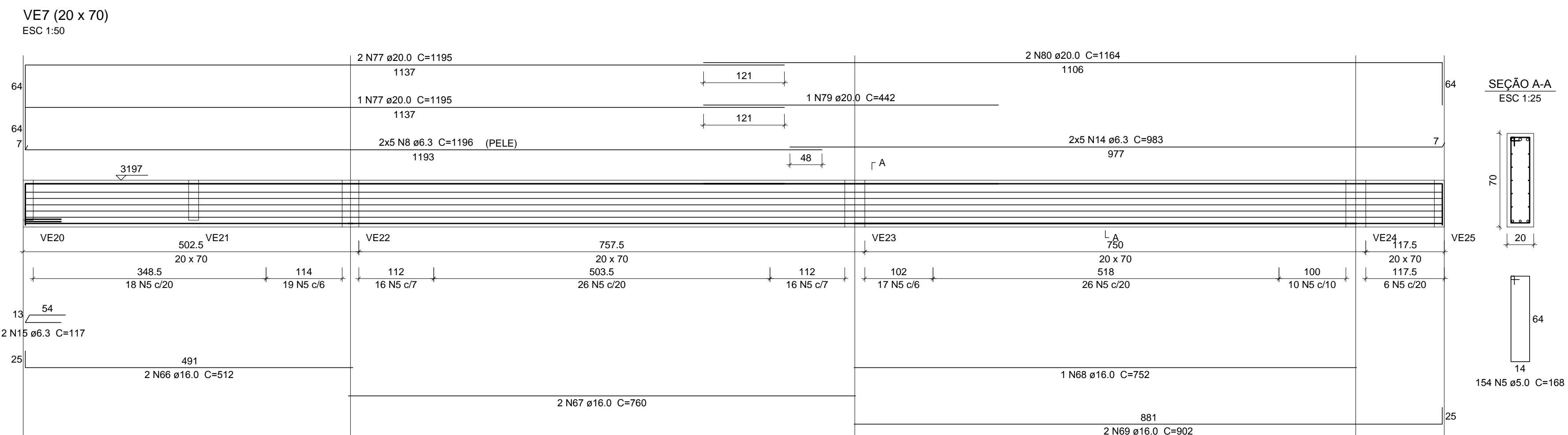
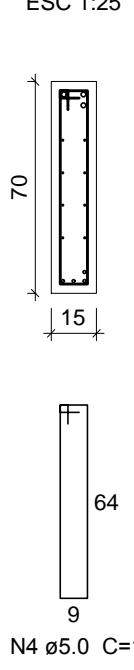
SEÇÃO A-A  
ESC 1:25



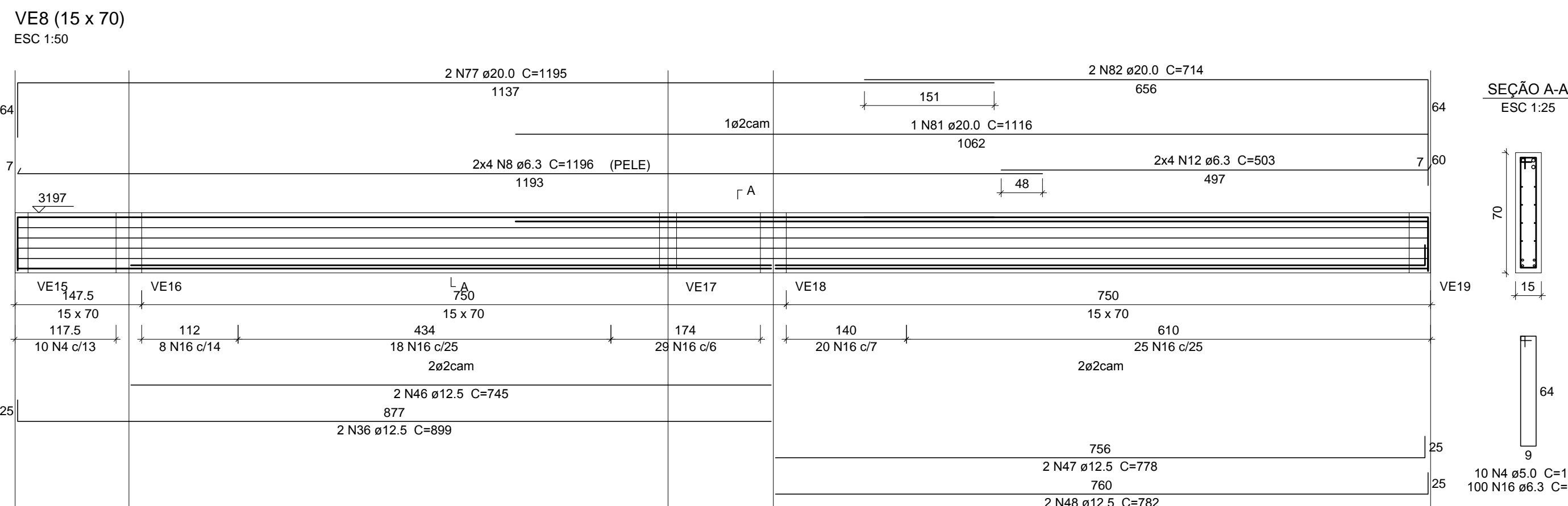
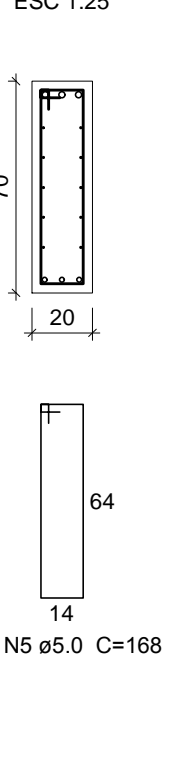
SEÇÃO A-A  
ESC 1:25



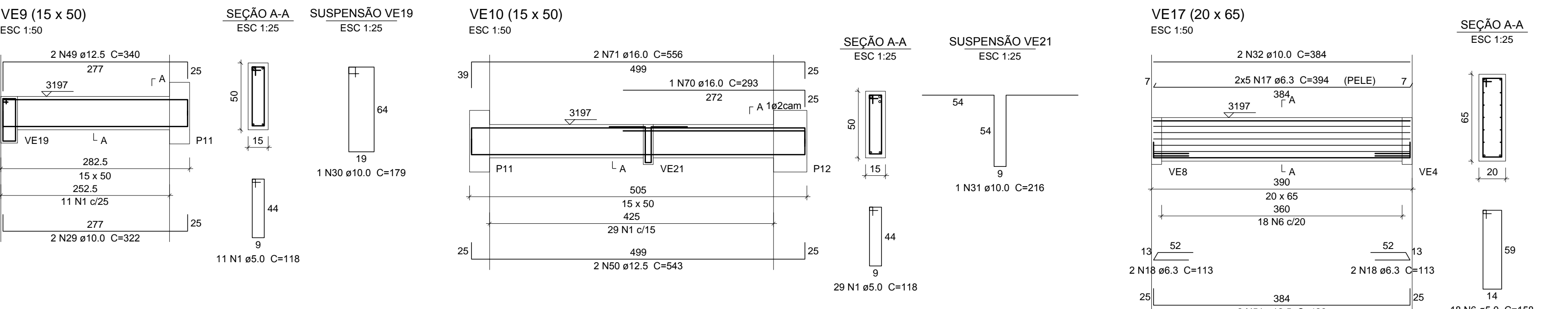
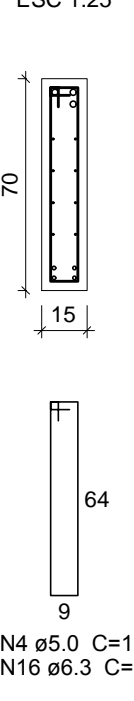
SEÇÃO A-A  
ESC 1:25



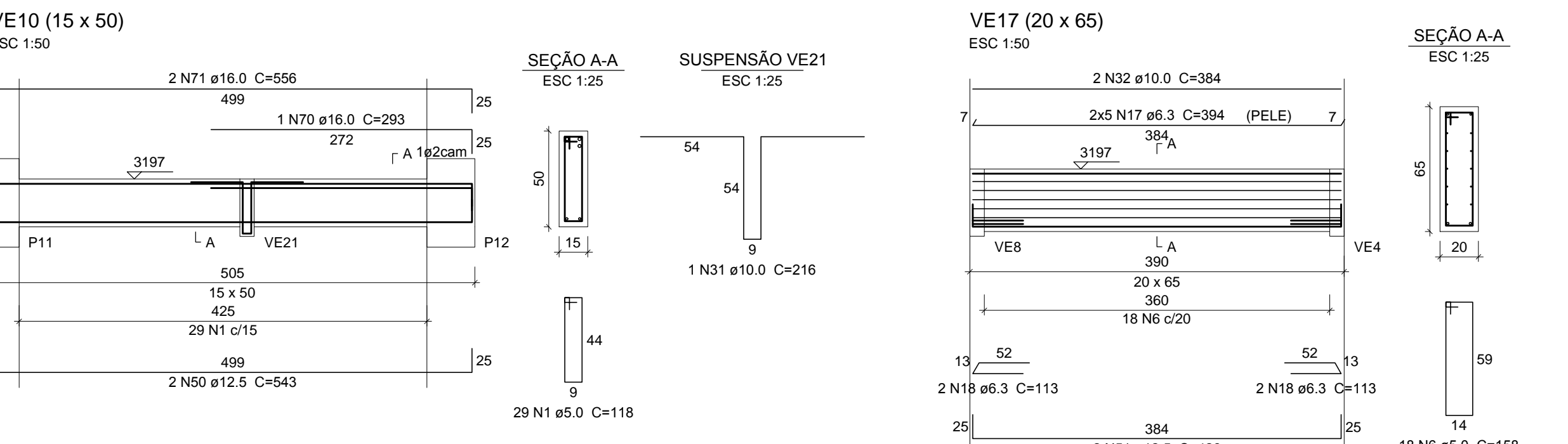
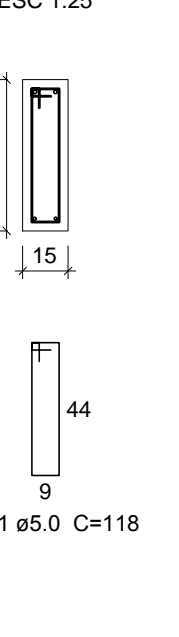
SEÇÃO A-A  
ESC 1:25



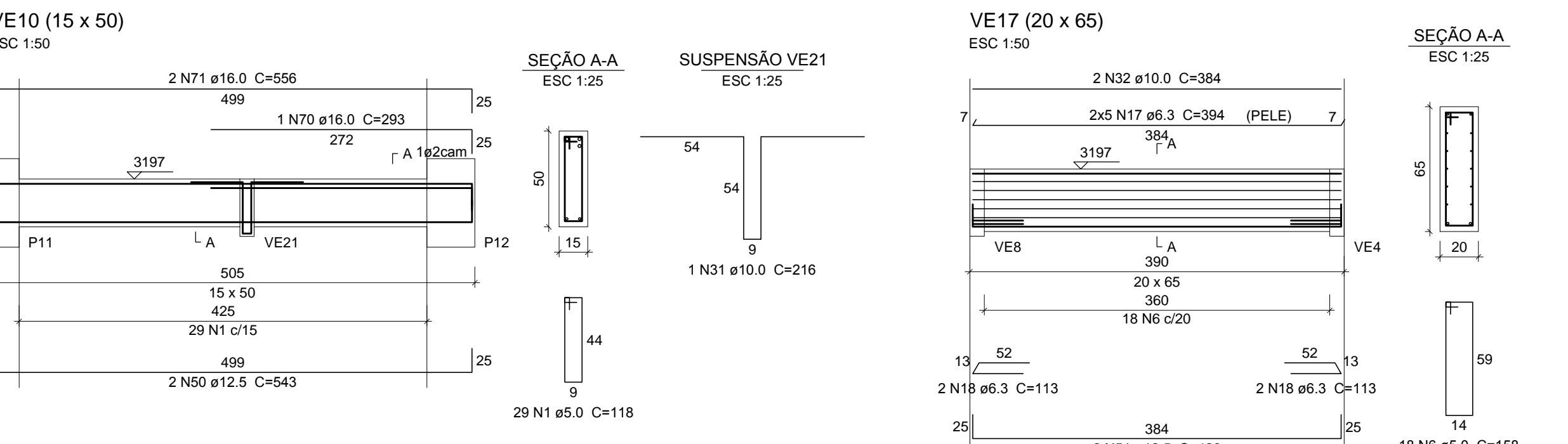
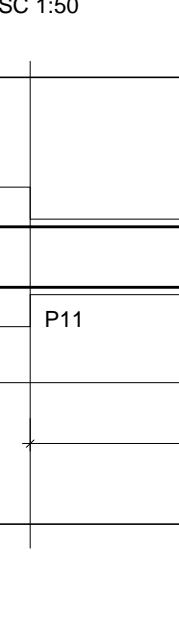
SEÇÃO A-A  
ESC 1:25



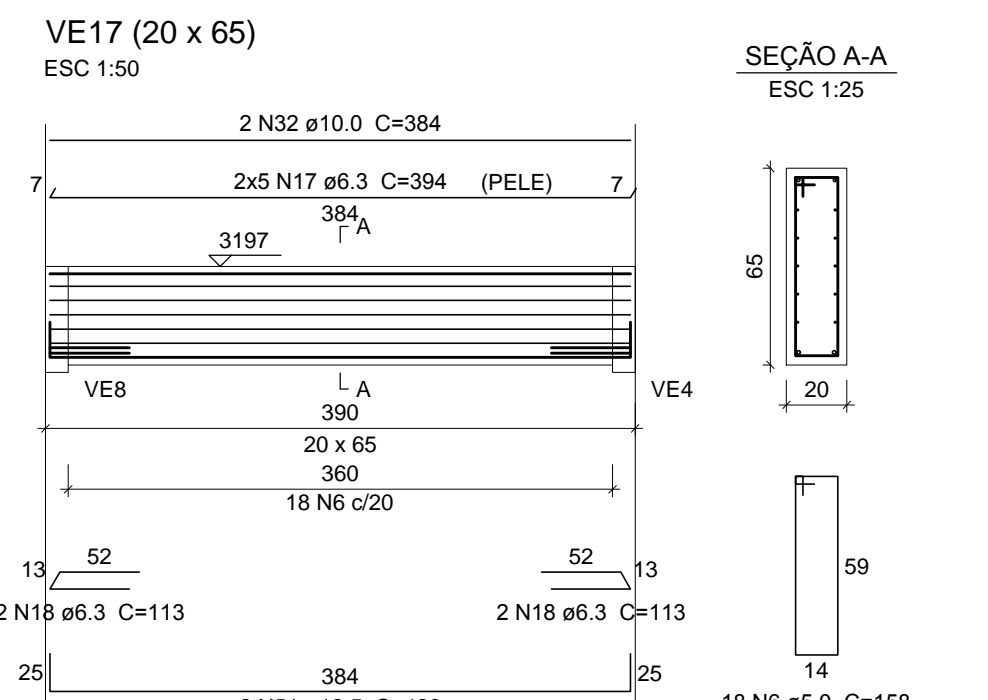
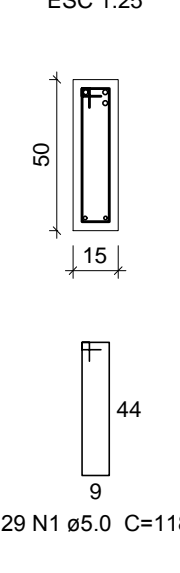
SEÇÃO A-A  
ESC 1:25



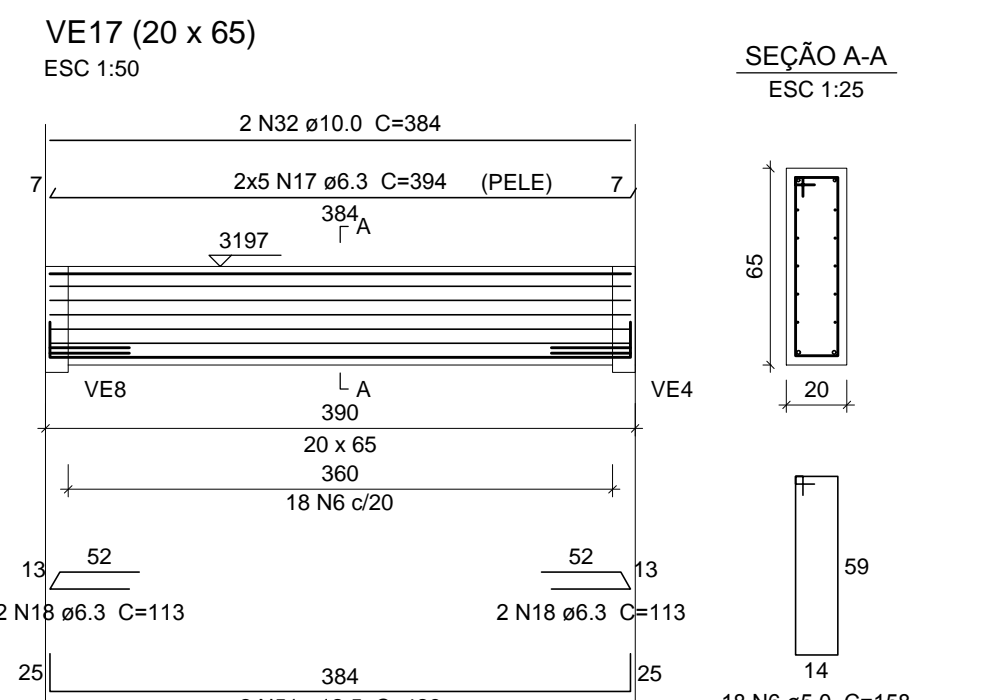
SEÇÃO A-A  
ESC 1:25



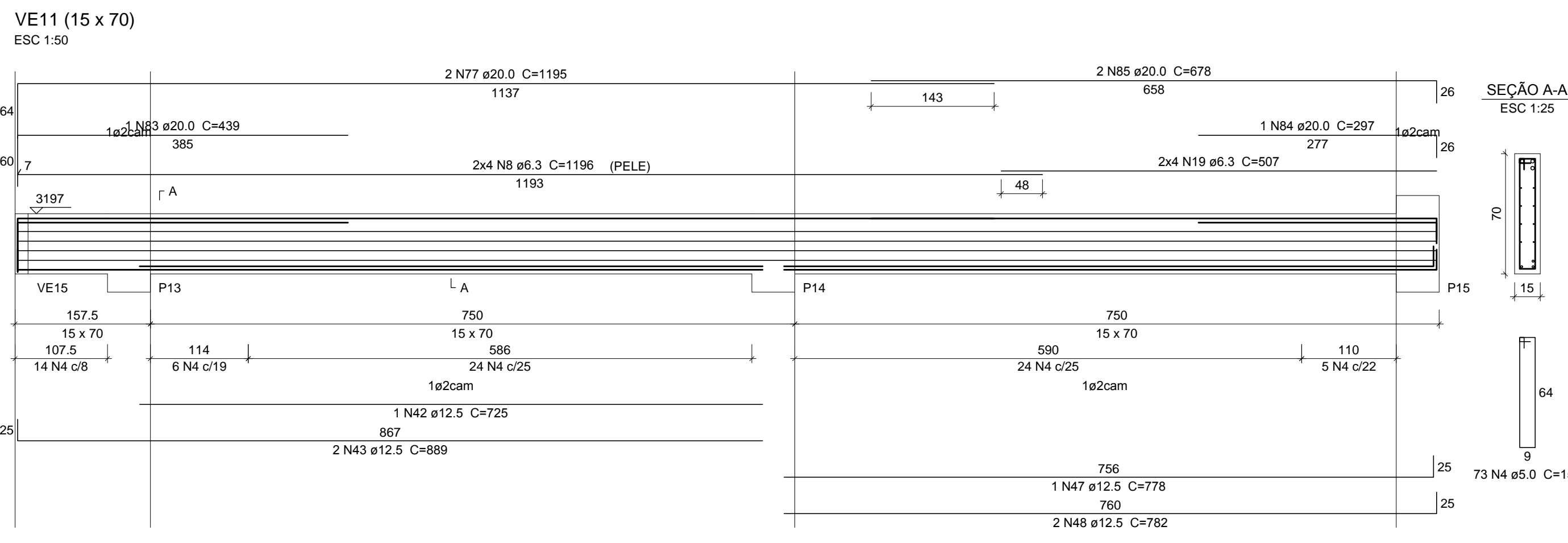
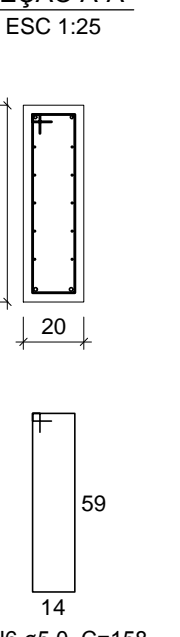
SEÇÃO A-A  
ESC 1:25



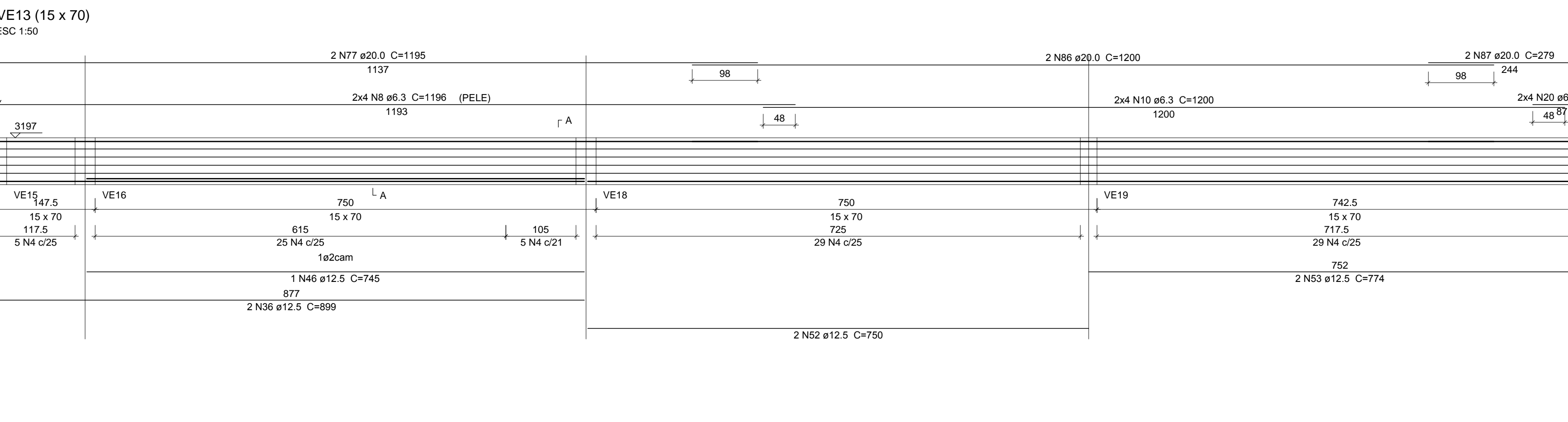
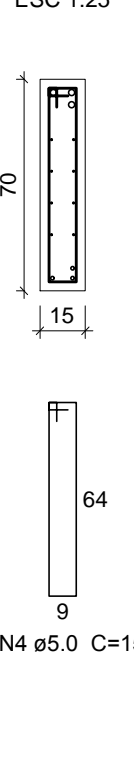
SEÇÃO A-A  
ESC 1:25



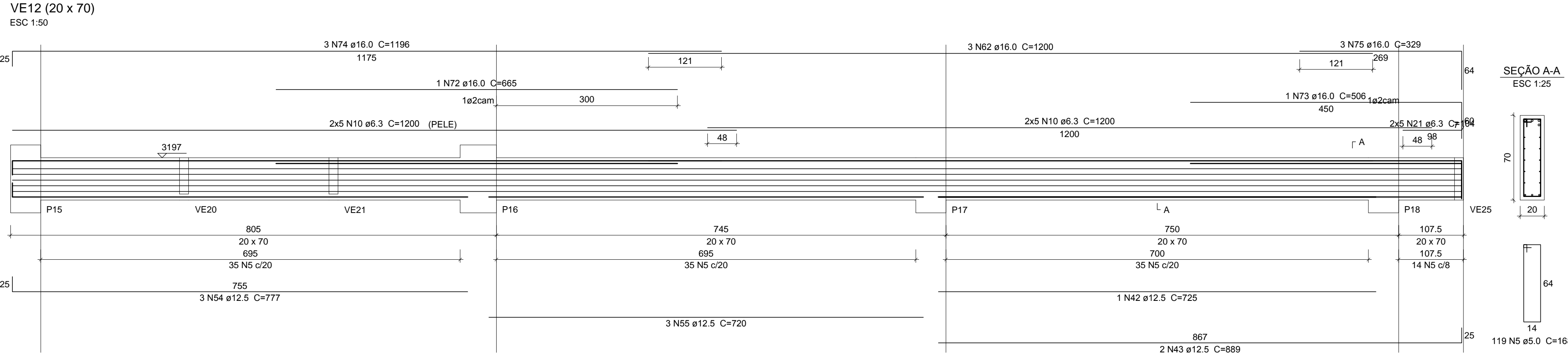
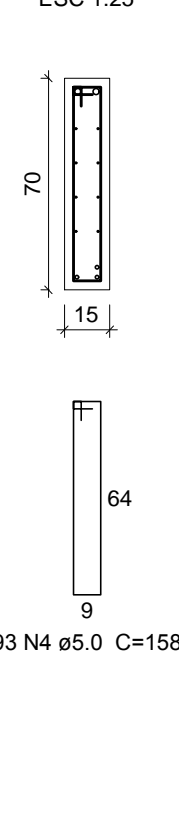
SEÇÃO A-A  
ESC 1:25



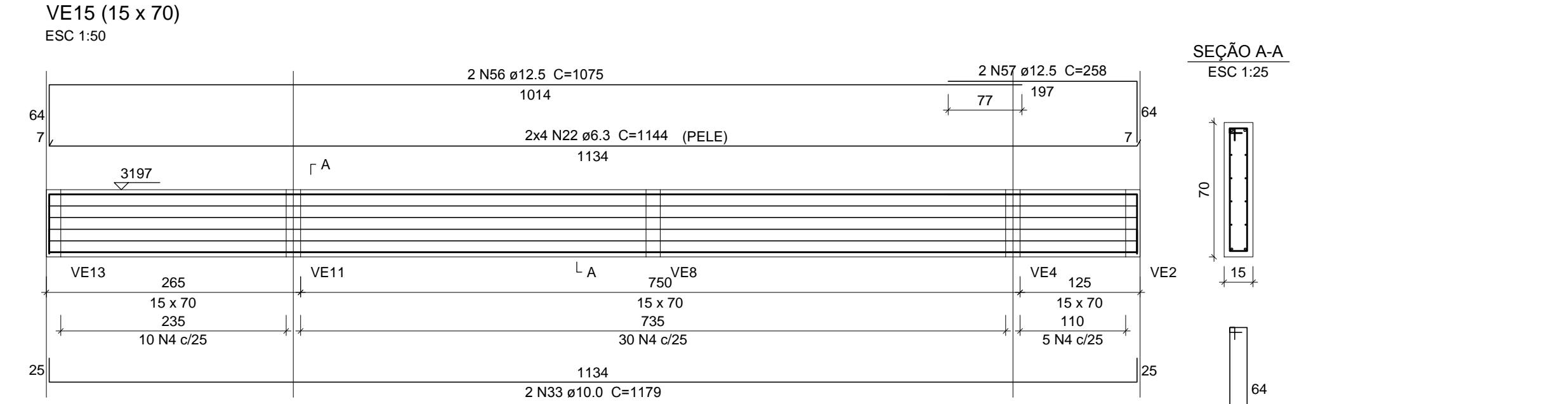
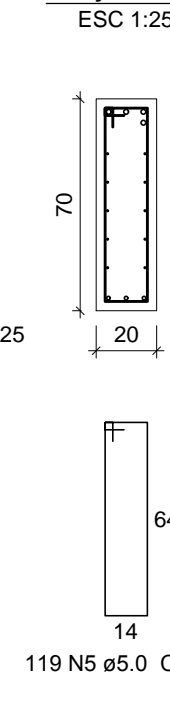
SEÇÃO A-A  
ESC 1:25



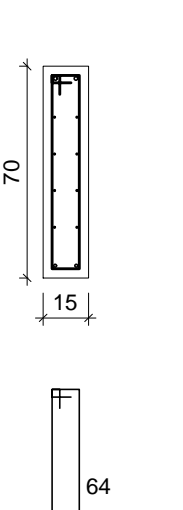
SEÇÃO A-A  
ESC 1:25



SEÇÃO A-A  
ESC 1:25

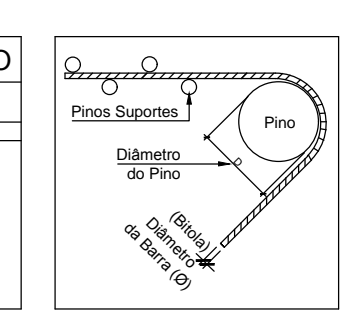


SEÇÃO A-A  
ESC 1:25



DOBRAMENTO DO AÇO

DIAM (mm)	ESCALA	DOBRAMENTO (mm)
6.3	100	32
8.0	100	40
10.0	100	48
12.5	100	60
16.0	100	80
20.0	100	100
25.0	100	125



- NOTAS GERAIS :
- PARA TODAS AS PARTES DA OBRA :
  - CONCRETO F<sub>ck</sub>=25.0 MPa (250 kgf/cm<sup>2</sup>); FATOR AGUACIMENTO MÁXIMO = 0.8 kg; CONSUMO MÍNIMO DE CIMENTO = 350kg/m<sup>3</sup>.
  - EFETUAR CURA DO CONCRETO POR UM PERÍODO NÃO INFERIOR A 7 DIAS, MANTENDO UMEDECIDA A SUPERFÍCIE E/OU PROTEGENDO-A.
  - USAR DISTANCIADORES PARA GARANTIR OS COBRIMENTOS INDICADOS.
  - LAJES : COBRIMENTO : 2.5cm
  - VIGAS E PILARES : COBRIMENTO : 3.0cm
  - BLOCOS : COBRIMENTO : 4.0cm
  - CONFERIR MEDIDAS NO LOCAL ANTES DE EXECUTAR OS SERVIÇOS.
  - TODAS AS PEÇAS ESTRUTURAIS DEVERÃO TER AS DIMENSÕES MÍNIMAS MENCIONADAS NESTE PROJETO.
  - A EXECUÇÃO DA ESTRUTURA DEVERÁ OBEDECER AS PREScrições DA NBR-6118-2014.

Relação do aço

ACO	N	DIAM (mm)	QUANT	C.UNIT (cm)	C.TOTAL (cm)
CA50	1	5.0	61	116	7198
	2	5.0	4	180	720
	3	5.0	4	180	720
	4	5.0	4	180	720
	5	5.0	273	168	45864
	6	5.0	18	156	2844
	7	6.3	8	820	6560
	8	6.3	50	1196	59800
	9	6.3	8	754	6032
	10	6.3	44	1200	52800
	11	6.3	8	1016	8144
	12	6.3	16	503	8048
	13	6.3	8	506	4048
	14	6.3	10	883	8830
	15	6.3	2	117	234
	16	6.3	100	156	15600
	17	6.3	10	394	3940
	18	6.3	4	113	452
	19	6.3	8	507	4056
	20	6.3	8	93	744
	21	6.3	10	104	1040
	22	6.3	8	1144	9152
	23	10.0	2	262	524
	24	10.0	2	319	638
	25	10.0	1	777	777
	26	10.0	2	780	1560
	27	10.0	2	720	1440
	28	10.0	2	1176	1176
	29	10.0	2	322	644
	30	10.0	1	179	179
	31	10.0	2	216	432
	32	10.0	2	384	768
	33	10.0	2	1179	2358
	34	12.5	2	306	612
	35	12.5	2	819	1638
	36	12.5	2	896	1792
	37	12.5	2	1039	2078
	38	12.5	2	340	680
	39	12.5	2	548	1096
	40	12.5	2	552	1104
	41	12.5	2	753	1506
	42	12.5	3	725	2175
	43	12.5	3	889	2667
	44	12.5	2	768	1536
	45	12.5	2	772	1544
	46	12.5	3	745	2235
	47	12.5	3	778	2334
	48	12.5	2	782	1564
	49	12.5	2	340	680
	50	12.5	2	543	1086
	51	12.5	2	428	856
	52	12.5	2	750	1500
	53	12.5	2	774	1548
	54	12.5	3	777	2331
	55	12.5	3	720	2160
	56	12.5	2	1075	2150
	57	12.5	2	258	516
	58	16.0	2	940	1880
	59	16.0	2	1197	2394
	60	16.0	2	883	1766
	61	16.0	1	232	464
	62	16.0	8	1200	9600
	63	16.0	2	1144	2288
	64	16.0	1	622	1244
	65	16.0	2	630	1260
	66	16.0	2	512	1024
	67	16.0	2	760	1520
	68	16.0	2	752	1504
	69	16.0	2	902	1804
	70	16.0	1	253	506
	71	16.0	2	556	1112
	72	16.0	1	665	1330
	73	16.0	1	506	1012
	74	16.0	3	1196	3588
	75	16.0	3	329	987
	76	20.0	1	1126	2252
	77	20.0	11	1196	13156
	78	20.0	2	698	1396
	79	20.0	1	442	884
	80	20.0	2	1164	2328
	81	20.0	1	1116	2232
	82	20.0	2	714	1428
	83	20.0	1	439	878
	84	20.0	1	297	594
	85	20.0	2	678	1356
	86	20.0	2	1200	2400
	87	20.0	2	279	558

Resumo do aço

ACO	DIAM (mm)	C.TOTAL (m)	PESO (kg)
CA50	6.3	1907.6	466.8
	10.0	116.8	71.9
	12.5	476.4	453.1
	16.0	323	509.7
CA60	20.0	260.4	642
	5.0	1490.1	229.7
PESO TOTAL (kg)			
CA50	2143.4		
CA60	229.7		

Volume de concreto (C-25) = 23.85 m<sup>3</sup>

Área de forma = 328.96 m<sup>2</sup>

COORDENADOR DE CONTRATO : JOSÉ CARLOS DA ROCHA RNP : 05008303-3

RESPONSÁVEL TÉCNICO : ALESSANDRE M. ASSIS PEREIRA RNP : 05006746-7

ENGENHEIRO : LEILSON REZENDE RNP : 05008251-0

ALTERAÇÕES	DATA	RESPON	TIPO LOCAL DA ALTERAÇÃO
01			
02			
03			

COORDENADOR DE CONTRATO : JOSÉ CARLOS DA ROCHA RNP : 05008303-3	RESPONSÁVEL TÉCNICO : ALESSANDRE M. ASSIS PEREIRA RNP : 05006746-7
ENGENHEIRO : LEILSON REZENDE RNP : 05008251-0	



COORDENADOR DE PLANEJAMENTO, PROJETO E OBRA : ANA MARCIA ROBERTO PINHEIRO CUSI-AZEVES-4

DIRETOR DO NÚCLEO DE PROJETOS : ANA ROSANA DE LIMA CAVALCANTE-4

COORDENADOR DE PROJETO : ANA MARCIA ROBERTO PINHEIRO CUSI-AZEVES-4

ENGENHEIRO : LEILSON REZENDE RNP : 05008251-0

ENGENHEIRO : LEILSON REZENDE RNP : 05008251-0

ENGENHEIRO : LEILSON REZENDE RNP : 05008251-0

ENGENHEIRO : LEILSON REZENDE RNP : 05008251-0